

## ERA\_4 ways

Design Antoy Filips

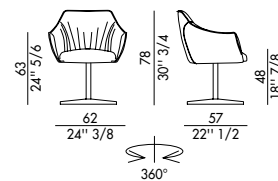


Era 4 Ways è la poltroncina imbottita dallo stile raffinato e prestigioso ma al contempo contemporanea, la soluzione ideale per ambienti lavorativi o contesti domestici con l'angolo ufficio. Progettata dal designer Antoy Filips, questa poltroncina imbottita si presenta con base girevole a 4 razze in alluminio verniciato o spazzolato. Lo stile, le linee e i volumi sono estremamente moderni e contemporanei. Punto di forza del complemento d'arredo sono i dettagli e la cura sartoriale che conquistano subito lo sguardo più attento. Da sedie importanti, ci si aspettano responsabilità importanti. Per questo la sedia Era 4 Ways si colloca alla perfezione a fianco di una scrivania strutturata e scultorea come la Rotolo Desk, in compagnia di una libreria dallo stile essenziale come la Bendy. Disponibile in pelle, ecopelle o tessuto e anche nella versione girevole con rotelle Era 5 Ways. Questa poltroncina imbottita è versatile e adattabile a numerose situazioni e contesti diversi: in ufficio, nell'angolo home office, a fianco di tavoli scultorei.

*Era 4 Ways is the upholstered armchair with a refined and prestigious yet contemporary style, the ideal solution for work environments or home settings with an office corner. Designed by the designer Antoy Filips, this upholstered armchair comes with a 4-spoke swivel base in painted or brushed aluminum. The style, lines, and volumes are extremely modern and contemporary. The strength of the piece of furniture lies in the details and tailoring that immediately catch the eye of the most attentive observer. From important chairs, important responsibilities are expected. That's why the Era 4 Ways chair is perfectly placed next to a structured and sculptural desk like the Rotolo Desk, alongside an essential style bookcase like the Bendy. Available in leather, eco-leather or fabric, and also in the swivel version with wheels Era 5 Ways. This upholstered armchair is versatile and adaptable to many different situations and contexts: in the office, in the home office corner, next to sculptural tables.*

**eforma**  
DESIGN ITALIANO



## Informazioni tecniche / Technical informations



### Poltroncina imbottita con base girevole a 4 razze in alluminio verniciato o spazzolato.

Nero	V01	Titanio	V04
Bianco	V02	Bronzo	V05
Antracite	V03	Alluminio Spaz.	ASP



### Rivestimento non sfoderabile.

 H 140 cm x L 140 cm  2,80 m<sup>2</sup>

### Upholstered armchair with swivel 4 ways base in painted or polished aluminium.

Black	V01	Titanium	V04
White	V02	Bronze	V05
Anthracite	V03	Polished Aluminium	ASP

### Cover not removable.

 H 140 cm x L 140 cm  2,80 m<sup>2</sup>

# FINITURE/FINISHES

Attenzione: il prodotto finito può presentare delle lievi variazioni di colore rispetto ai campioni forniti dall'azienda. I colori visualizzati sono puramente indicativi e possono variare rispetto alla realtà. Rivolgersi ad EFORMA o al proprio rivenditore di fiducia per ricevere maggiori informazioni. EFORMA si riserva di apportare modifiche e/o migliorie di carattere tecnico ed estetico ai propri modelli e prodotti in qualsiasi momento e senza preavviso. / *Attention: the final product may show slight variations in colour compared to the samples supplied by the company. The colours displayed are indicative and can vary in reality. Please contact EFORMA or your preferred retailer for more information. EFORMA reserves the right to change and/or apply technical and esthetical improvements to its models and products at any time without any notice.*

## Metallo/Metal

I metalli della nostra collezione vengono verniciati a polvere così da rivestire le nostre superfici a scopo decorativo e protettivo. Lo spessore finale della verniciatura a polveri, risulta particolarmente elevata contribuendo ad una serie di rilevanti vantaggi sul prodotto verniciato: resistenza meccanica, resistenza agli agenti corrosivi, scarsa infiammabilità, precisione nell'applicazione. Le verniciature a polveri utilizzate sono totalmente atossiche e prive di solventi, per questo motivo la verniciatura a polveri è una lavorazione ECO-FRIENDLY, a bassissimo impatto ambientale. Disponibile la versione cromata dove il metallo o l'alluminio vengono rivestiti di cromo, conferendogli così durezza, resistenza chimica e resistenza all'ossidazione. / *The metals in our collection are powder coated in order to coat our surfaces for decorative and protective purposes. The final thickness of the powder coating is particularly high contributing to a series of advantages for the painted product: mechanical resistance, resistance to corrosive agents, low flammability, precision in the application. The powder coatings used are non-toxic and solvent-free, for this reason powder coating is an ECO-FRIENDLY process, with a very low environmental impact. The chrome version is available where the metal or aluminum is coated with chrome, giving it hardness, chemical resistance and resistance to oxidation.*



V01 - Nero/Black



V02 - Bianco/White



V03 - Antracite/Anthracite



V04 - Titanio/Titanium



V05 - Bronzo/Bronze



V06 - Oro/Gold



CRO - Cromo/Chrome



CRN - Cromo Nero/  
Black Chrome



ASP - Alluminio Spazzolato/  
Polished Aluminium



## Legno/Wood

Il legno che viene utilizzato è tra i migliori che esistono sul mercato europeo. Viene lavorato con le migliori tecniche garantendo così resistenza e durata. *The wood which is used is one of the best available in European markets. It is worked with the best techniques guaranteeing resistance and durability.*

### LEGNO MASSELLO/SOLID WOOD

Il legno utilizzato è un materiale di pregio che si caratterizza principalmente per la resistenza all'usura e per l'estetica. Durante il suo ciclo di crescita, sviluppo e maturazione, il legno si evolve nelle sue qualità come il cambio nel colore, nei nodi, e nelle vene. Essendo un materiale vivo, e naturale, può presentare delle variazioni di vene e di tonalità. *The wood used is a valuable material that is mainly characterized by its wear resistance and its aesthetics. During its cycle of growth, development and maturation, the wood's qualities. Evolve showing a change in color, in the knots, and in the veins. Being a living, natural material, it can present variations in veins and shades.*



FVC - Frassino tinto Noce Canaletto/  
Canaletto Walnut stained Ash



FNR - Frassino tinto Nero/Black stained Ash



FTM - Frassino tinto Testa di Moro/  
Dark Brown stained Ash

## Finiture imbottiture / Upholstery Finishes

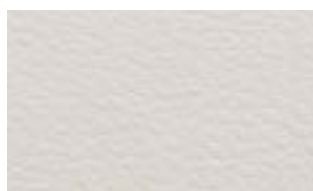
### Rivestimento in ecopelle / Covering in eco-leather



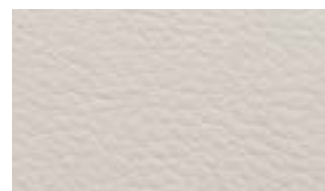
1 Bianco



2 Latte



25 Panna



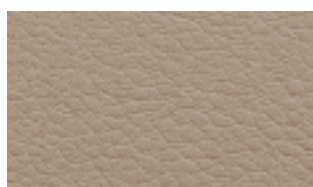
9 Avorio



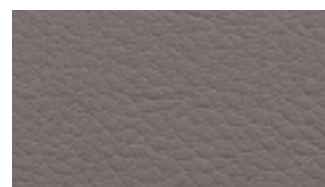
11 Beige



13 Canapa



12 Beige scuro



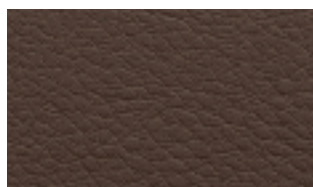
14 Fango



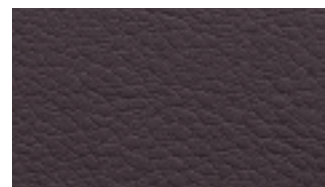
15 Tortora



30 Tabacco



31 Marrone scuro



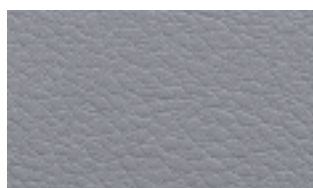
16 Testa di moro



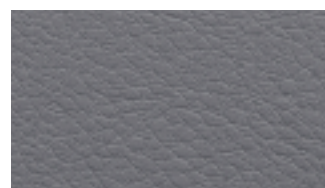
4 Grigio chiaro



5 Grigio



6 Cenere



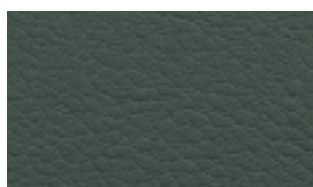
7 Antracite



56 Oceano



8 Nero



24 Verde scuro



23 Verde salvia



39 Bordeaux



35 Rosso

**Rivestimento in econabuk / Covering in eco-nabuk**



15 Bianco



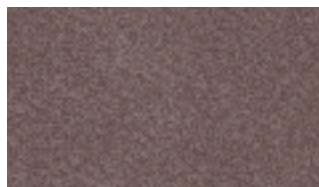
1 Beige



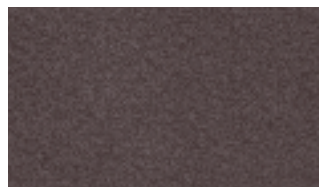
2 Marrone



3 Fango



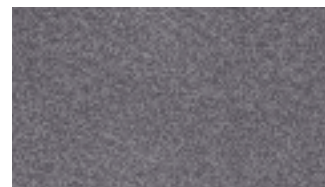
4 Cioccolato



5 Testa di moro



13 Grigio



6 Antracite



17 Blu



16 Bordeaux



11 Viola



12 Vinaccia



10 Ottanio

**Rivestimento in econabuk / Covering in eco-nabuk**



15 Bianco



1 Beige



2 Marrone



3 Fango



4 Cioccolato



5 Testa di moro



13 Grigio



6 Antracite



17 Blu



16 Bordeaux



11 Viola



12 Vinaccia



10 Ottanio

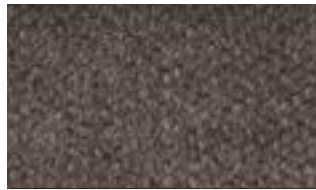
**Rivestimento in tessuto A / Covering fabric A**



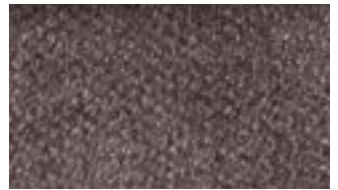
A 100



A 101



A 102



A 103



A 104



A 105



A 106



A 107



A 200



A 202



A 203



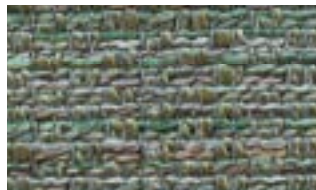
A 204



A 301



A 302



A 303

**Rivestimento in tessuto B / Covering in fabric B**



B 200



B 201



B 202



B 203



B 204



B 205



B 300



B 301



B 302



B 303



B 304



B 305



B 400



B 401



B 402



B 403



B 404



B 405



B 128



B 108



B 139



B 103



B 136



B 123



## Rivestimento in pelle / Covering in leather



5000 Bianco



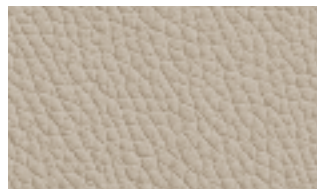
5518 Latte



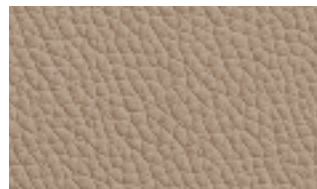
5508 Avorio



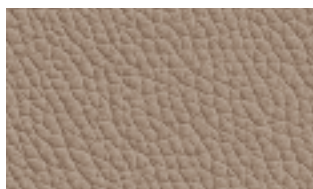
5480 Panna



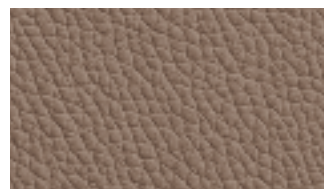
5528 Beige



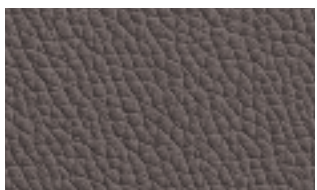
5320 Beige scuro



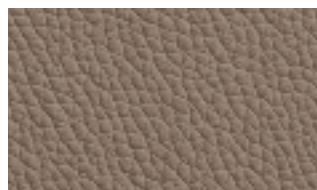
9034 Creta



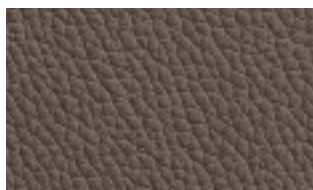
5502 Avana



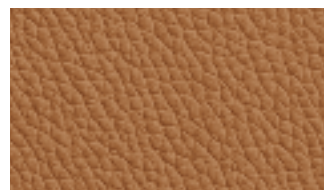
5414 Marrone



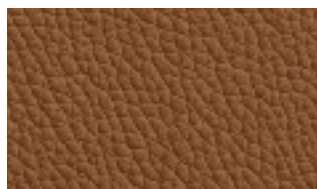
5522 Tortora



5504 Fango



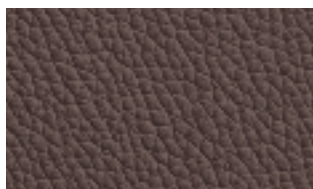
5070 Nocciola



5110 Tabacco



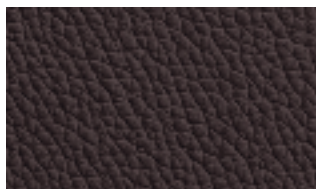
5090 Marrone chiaro



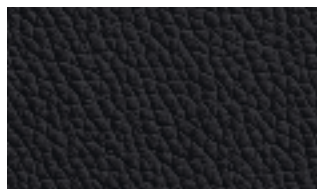
5400 Marrone scuro



9030 Cioccolato



5270 Testa di moro



5300 Nero



5402 Grigio chiaro



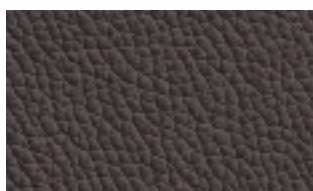
2256 Ghiaccio



5280 Cenere



5290 Grigio medio



5310 Antracite



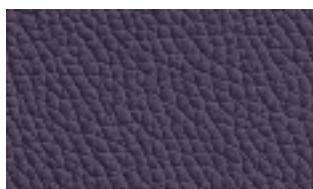
5200 Rosso



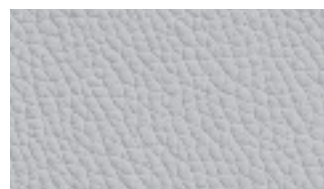
5210 Bordeaux



5460 Mora

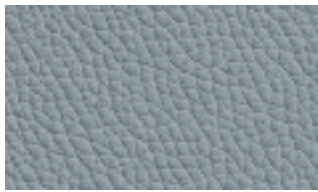


5406 Vinaccia



5420 Grigio





5416 Avio



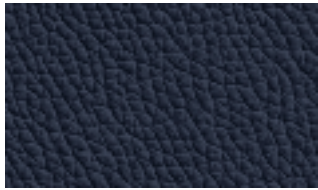
5428 Ottanio



9031 Blu



9021 Oceano



5431 Blu notte



5120 Verde salvia

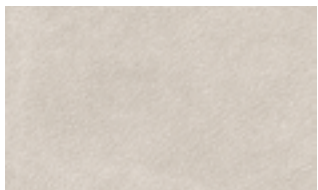


5150 Verde bosco



9045 Muschio

## Rivestimento in pelle nabuk / *Covering in nabuk leather*



100 Sabbia



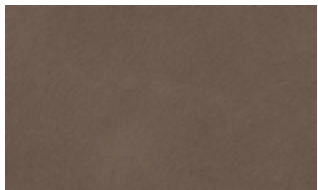
101 Conchiglia



102 Seppia



103 Terra



110 Marrone



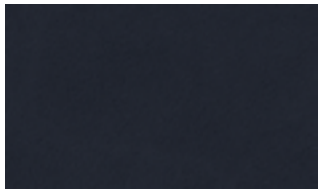
105 Marrone scuro



104 Salvia



106 Orione



107 Oceano



108 Grigio



109 Antracite

## Finiture dettagli / *Detail finishes*

### Cordino in ecopelle e Zip / *Piping eco-leather and Zip*



1 Bianco



7 Antracite



8 Nero



11 Beige



14 Fango



16 Testa di Moro