

# LARA\_trespolo legno / LARA\_wooden perch

Design CSR Eforma



Lara trespolo in legno è la sedia da salotto comoda e accogliente, resa particolare dalla tipica struttura svasata delle quattro gambe a trespolo. Questa sedia da salotto si inserisce all'interno del progetto di design CSR Eforma, e si presenta con una morbida seduta imbottita, supportata dalla base in legno massello di frassino tinto. Il rivestimento della seduta è disponibile in pelle, ecopelle o tessuto. Le linee avvolgenti e il morbido cuscino integrato rendono la sedia Lara trespolo in legno adatta a spazi della zona giorno, dove restare seduti e vivere i momenti di convivialità senza accorgersi dello scorrere del tempo. Disponibile anche nelle versioni Lara 4 gambe in legno, Lara 4 con gambe in metallo,

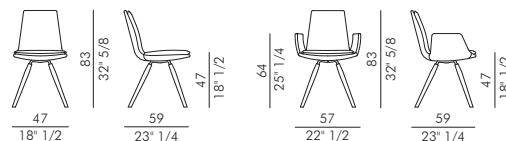
*Lara wooden trestle is the comfortable and welcoming living room chair, made special by the typical flared structure of the four trestle legs. This living room chair is part of the CSR Eforma design project, and features a soft padded seat, supported by the base in solid stained ash wood. The seat upholstery is available in leather, eco-leather or fabric. The enveloping lines and the soft integrated cushion make the Lara wooden trestle chair suitable for spaces in the living area, where you can sit and enjoy moments of conviviality without noticing the passage of time. Also available in the Lara 4 wooden legs, Lara 4 with metal legs versions.*

**eforma**  
DESIGN ITALIANO

## Informazioni tecniche / Technical informations



CATAS  
RAPPORTO DI PROVA  
222579



### Sedia e poltroncina imbottita con base in legno massello di frassino tinto.

Noce Canaletto	FVC
Frassino Nero	FNR
Frassino Testa di Moro	FTM

### Rivestimento non sfoderabile.

LARA	H 140 cm x L 110 cm	2,10 m <sup>2</sup>
LARA arm	H 140 cm x L 130 cm	2,60 m <sup>2</sup>

### Upholstered chair and armchair with ash stained solid wooden trestle base.

Canaletto Walnut Ash	FVC
Black Ash	FNR
Dark Brown Ash	FTM

### Cover not removable.

LARA	H 140 cm x L 110 cm	2,10 m <sup>2</sup>
LARA arm	H 140 cm x L 130 cm	2,60 m <sup>2</sup>

# FINITURE/FINISHES

Attenzione: il prodotto finito può presentare delle lievi variazioni di colore rispetto ai campioni forniti dall'azienda. I colori visualizzati sono puramente indicativi e possono variare rispetto alla realtà. Rivolgersi ad EFORMA o al proprio rivenditore di fiducia per ricevere maggiori informazioni. EFORMA si riserva di apportare modifiche e/o migliorie di carattere tecnico ed estetico ai propri modelli e prodotti in qualsiasi momento e senza preavviso. / *Attention: the final product may show slight variations in colour compared to the samples supplied by the company. The colours displayed are indicative and can vary in reality. Please contact EFORMA or your preferred retailer for more information. EFORMA reserves the right to change and/or apply technical and esthetical improvements to its models and products at any time without any notice.*

## Metallo/Metal

I metalli della nostra collezione vengono verniciati a polvere così da rivestire le nostre superfici a scopo decorativo e protettivo. Lo spessore finale della verniciatura a polveri, risulta particolarmente elevata contribuendo ad una serie di rilevanti vantaggi sul prodotto verniciato: resistenza meccanica, resistenza agli agenti corrosivi, scarsa infiammabilità, precisione nell'applicazione. Le verniciature a polveri utilizzate sono totalmente atossiche e prive di solventi, per questo motivo la verniciatura a polveri è una lavorazione ECO-FRIENDLY, a bassissimo impatto ambientale. Disponibile la versione cromata dove il metallo o l'alluminio vengono rivestiti di cromo, conferendogli così durezza, resistenza chimica e resistenza all'ossidazione. / *The metals in our collection are powder coated in order to coat our surfaces for decorative and protective purposes. The final thickness of the powder coating is particularly high contributing to a series of advantages for the painted product: mechanical resistance, resistance to corrosive agents, low flammability, precision in the application. The powder coatings used are non-toxic and solvent-free, for this reason powder coating is an ECO-FRIENDLY process, with a very low environmental impact. The chrome version is available where the metal or aluminum is coated with chrome, giving it hardness, chemical resistance and resistance to oxidation.*



V01 - Nero/Black



V02 - Bianco/White



V03 - Antracite/Anthracite



V04 - Titanio/Titanium



V05 - Bronzo/Bronze



V06 - Oro/Gold



CRO - Cromo/Chrome



CRN - Cromo Nero/  
Black Chrome



ASP - Alluminio Spazzolato/  
Polished Aluminium



## Legno/Wood

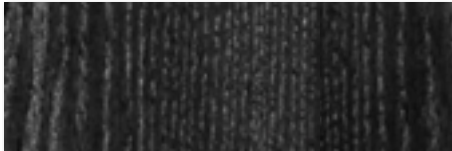
Il legno che viene utilizzato è tra i migliori che esistono sul mercato europeo. Viene lavorato con le migliori tecniche garantendo così resistenza e durata. *The wood which is used is one of the best available in European markets. It is worked with the best techniques guaranteeing resistance and durability.*

### LEGNO MASSELLO/SOLID WOOD

Il legno utilizzato è un materiale di pregio che si caratterizza principalmente per la resistenza all'usura e per l'estetica. Durante il suo ciclo di crescita, sviluppo e maturazione, il legno si evolve nelle sue qualità come il cambio nel colore, nei nodi, e nelle vene. Essendo un materiale vivo, e naturale, può presentare delle variazioni di vene e di tonalità. *The wood used is a valuable material that is mainly characterized by its wear resistance and its aesthetics. During its cycle of growth, development and maturation, the wood's qualities. Evolve showing a change in color, in the knots, and in the veins. Being a living, natural material, it can present variations in veins and shades.*



FVC - Frassino tinto Noce Canaletto/  
Canaletto Walnut stained Ash



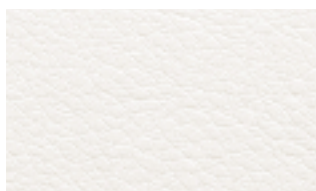
FNR - Frassino tinto Nero/Black stained Ash



FTM - Frassino tinto Testa di Moro/  
Dark Brown stained Ash

## Finiture imbottiture / Upholstery Finishes

### Rivestimento in ecopelle / Covering in eco-leather



1 Bianco



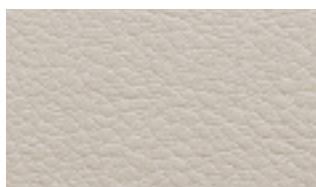
2 Latte



25 Panna



9 Avorio



11 Beige



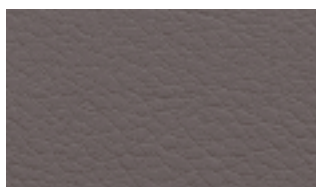
13 Canapa



12 Beige scuro



14 Fango



15 Tortora



30 Tabacco



31 Marrone scuro



16 Testa di moro



4 Grigio chiaro



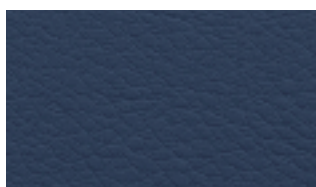
5 Grigio



6 Cenere



7 Antracite



56 Oceano



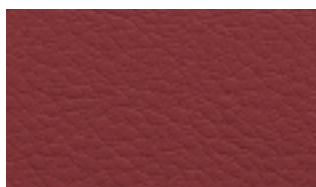
8 Nero



24 Verde scuro



23 Verde salvia



39 Bordeaux



35 Rosso



**Rivestimento in econabuk / Covering in eco-nabuk**



15 Bianco



1 Beige



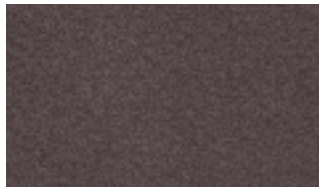
2 Marrone



3 Fango



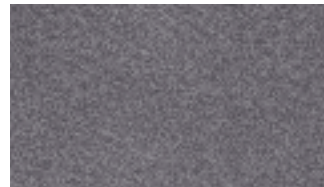
4 Cioccolato



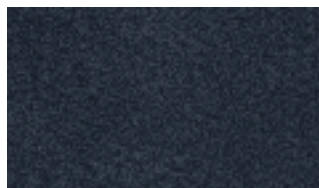
5 Testa di moro



13 Grigio



6 Antracite



17 Blu



16 Bordeaux



11 Viola



12 Vinaccia



10 Ottanio

**Rivestimento in econabuk / Covering in eco-nabuk**



15 Bianco



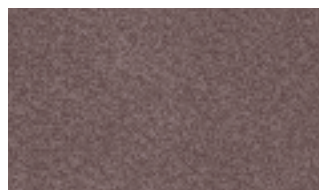
1 Beige



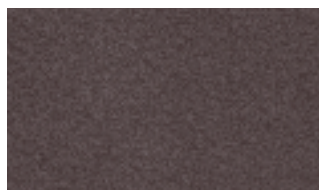
2 Marrone



3 Fango



4 Cioccolato



5 Testa di moro



13 Grigio



6 Antracite



17 Blu



16 Bordeaux



11 Viola



12 Vinaccia



10 Ottanio

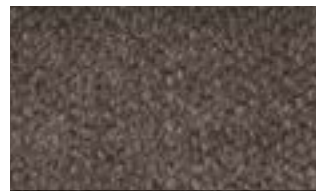
**Rivestimento in tessuto A / *Covering fabric A***



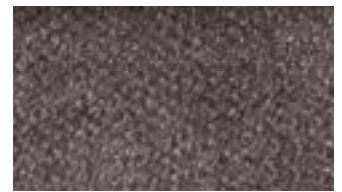
A 100



A 101



A 102



A 103



A 104



A 105



A 106



A 107



A 200



A 202



A 203



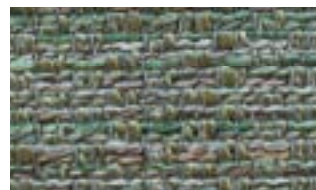
A 204



A 301



A 302



A 303



**Rivestimento in tessuto B / Covering in fabric B**



B 200



B 201



B 202



B 203



B 204



B 205



B 300



B 301



B 302



B 303



B 304



B 305



B 400



B 401



B 402



B 403



B 404



B 405



B 128



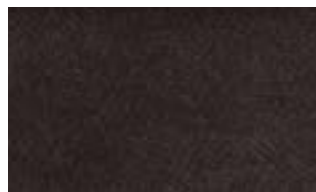
B 108



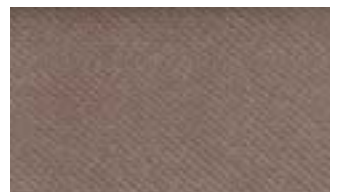
B 139



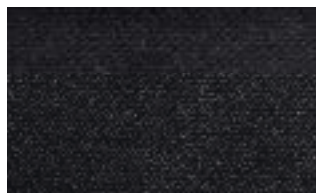
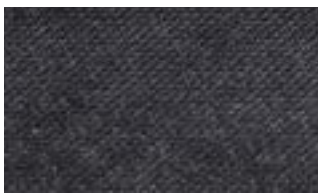
B 103



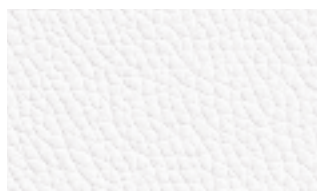
B 136



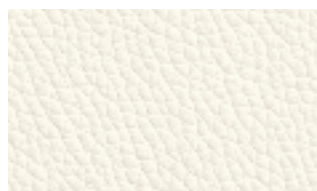
B 123



## Rivestimento in pelle / *Covering in leather*



5000 Bianco



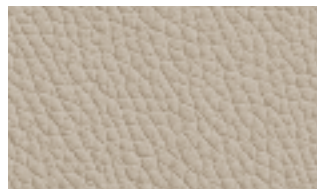
5518 Latte



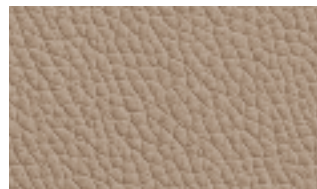
5508 Avorio



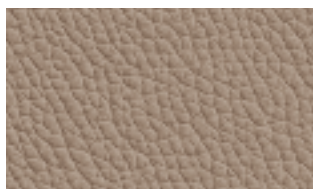
5480 Panna



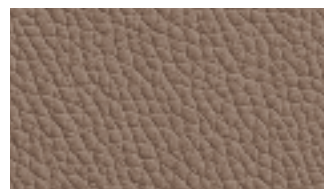
5528 Beige



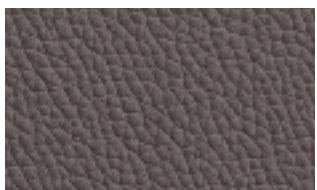
5320 Beige scuro



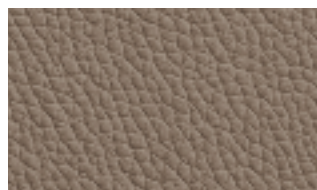
9034 Creta



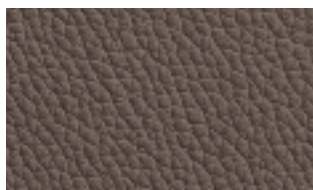
5502 Avana



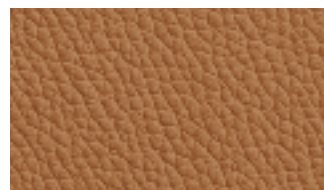
5414 Marrone



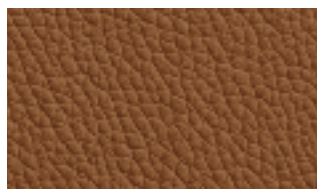
5522 Tortora



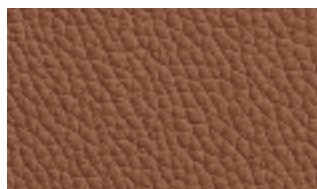
5504 Fango



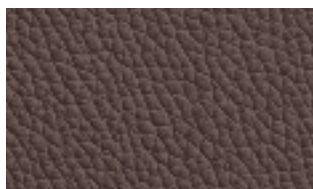
5070 Nocciola



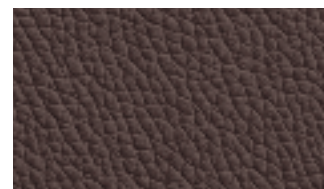
5110 Tabacco



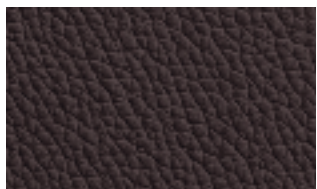
5090 Marrone chiaro



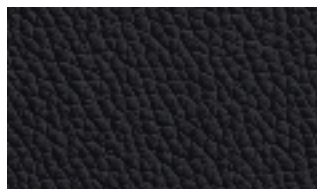
5400 Marrone scuro



9030 Cioccolato



5270 Testa di moro



5300 Nero



5402 Grigio chiaro



2256 Ghiaccio



5280 Cenere



5290 Grigio medio



5310 Antracite



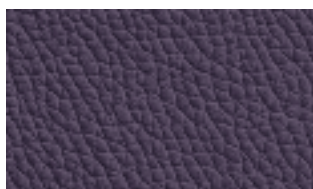
5200 Rosso



5210 Bordeaux



5460 Mora



5406 Vinaccia



5420 Grigio





5416 Avio



5428 Ottanio



9031 Blu



9021 Oceano



5431 Blu notte



5120 Verde salvia



5150 Verde bosco



9045 Muschio

## Rivestimento in pelle nabuk / *Covering in nabuk leather*



100 Sabbia



101 Conchiglia



102 Seppia



103 Terra



110 Marrone



105 Marrone scuro



104 Salvia



106 Orione



107 Oceano



108 Grigio



109 Antracite

## Finiture dettagli / *Detail finishes*

### Cordino in ecopelle e Zip / *Piping eco-leather and Zip*



1 Bianco



7 Antracite



8 Nero



11 Beige



14 Fango



16 Testa di Moro